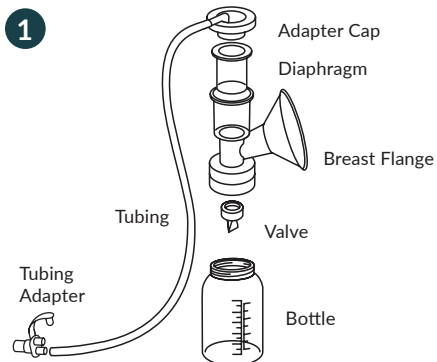




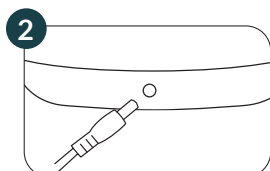
# Ameda Pearl Electric Breast Pump Quick Start Card

**IMPORTANT:** Only use an Ameda HygeniKit Milk Collection Kit. Consult your healthcare provider on pumping session time.

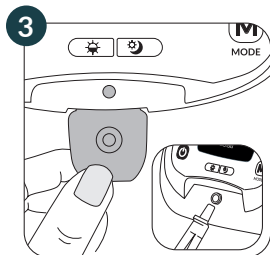
**GETTING STARTED:** Before first use, wash hands thoroughly with soap and water before touching breast pump, kit and breasts.



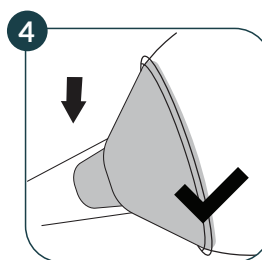
- If sterile, use immediately (kit is preassembled).
- If not sterile, clean, sanitize and assemble the kit (refer to the back of this Quick Start Card).



- Connect the power adapter to back of pump then to electrical outlet.

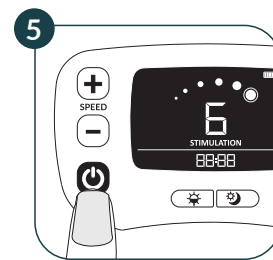


- Open port cover.
- Insert tubing adapter.
- Turn slightly to right and push firmly.
- For double pumping attach both tubes.
- For single pumping remove one tube from the tubing adapter and close one side using the attached plug.

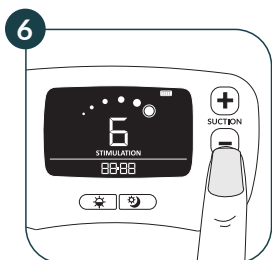


- Center flange on breast and press firmly to create a tight seal.
- Refer to the back of this Quick Start Card for proper flange fit.

**NOTE:** Make sure your upper body is upright.

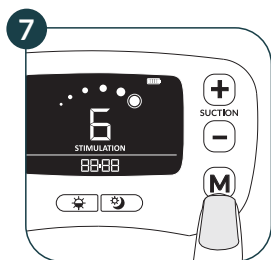


- Push power button.
- Pump will start in Stimulation Mode.



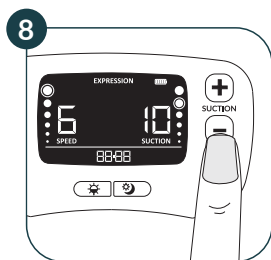
## Adjust Stimulation Vacuum Level

- Adjust the Stimulation Vacuum Level between 1 and 6 to your **preferred comfort** level.
- Start off with the suction low, and then gradually increase the suction setting to your **preferred comfort** level.



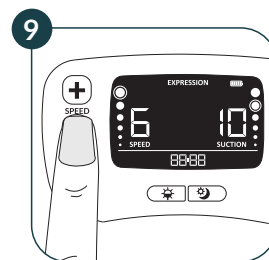
## Change Mode

- Once your milk starts to flow press the Mode (M) button to switch into Expression Mode.
- Press the Mode button again to go back to Stimulation Mode.



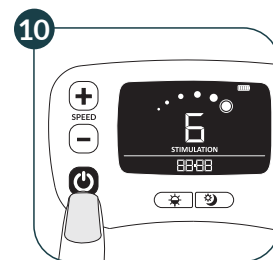
## Adjust Expression Vacuum Level

- Adjust the Expression Vacuum Level between 1 and 12 to your **preferred comfort** level.
- Start off with the suction low, and then gradually increase the suction setting to your **preferred comfort** level.



## Adjust Speed

Adjust the speed between 1 and 6 to your **preferred comfort** level.



## End Pumping Session

When finished pumping, press power button to turn off.

# Cleaning the Ameda Pearl Electric Breast Pump

## For At-Home/End Users:

After each pumping, turn pump OFF.  
Wipe with clean, damp cloth.

## For Hospital/Rental Stations:

Turn pump OFF, Clean between users, wearing disposable gloves. Use a hospital approved antibacterial cleaner such as CaviCide®, CaviWipes®, or PDI® Sani-Cloth® AF3.

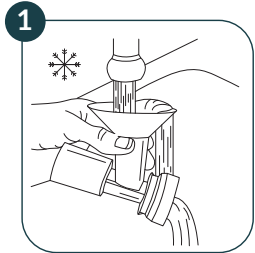
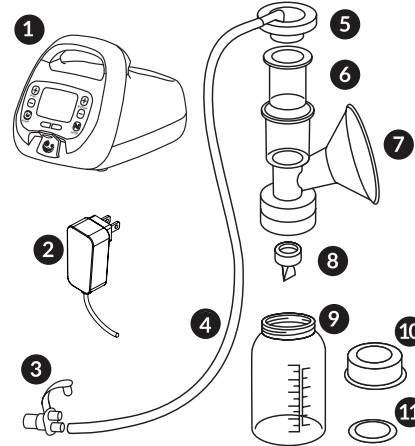
## Cleaning the Ameda HygieniKit

1. Ameda Pearl Electric Breast Pump Unit
2. Power Adapter
3. Tubing Adapter
4. Tubing
5. Adapter Cap
6. Diaphragm
7. Breast Flange
8. Silicone Valve
9. Bottle
10. Bottle Locking Ring Cap
11. Bottle Locking Disc

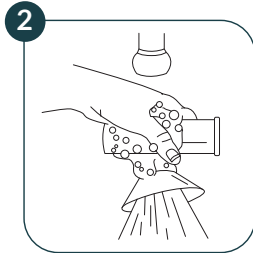
### IMPORTANT Do Not Wash:

- Tubing Adapter
- Silicone Tubing
- Adapter Cap

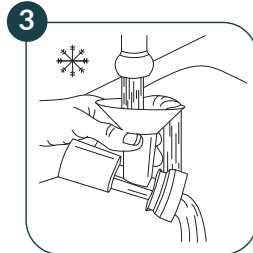
These parts **Do Not** need to be washed before first use or after each use – milk does not come into contact with these parts while pumping.



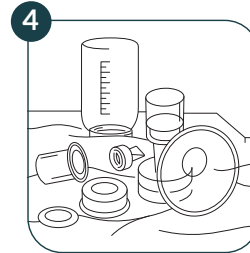
RINSE any milk from pump parts with cool water.



Hand WASH all parts - except for tubing, adapter cap and tubing adapter - with warm, soapy water. Do not insert anything into valve or diaphragm while cleaning.



RINSE well with warm, clean water.



Air-dry thoroughly on a clean surface.

### Breast Pump Valve and Diaphragm Check

Inspect the valves and diaphragms for tears or holes. Replace any damaged valves and diaphragms prior to pumping. Do not insert bottle brush or something similar into valves. We recommend replacing valves every 8-12 weeks and diaphragms every 4-6 weeks. If pumping at maximum settings, you may need to replace diaphragms more frequently.



SCAN ME



Consult Instructions For Use Ameda Pearl Electric Breast Pump and HygieniKit

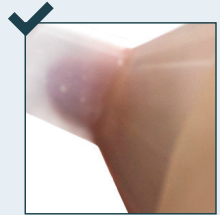


## Find your Best Fit

A good breast flange fit ensures a perfect seal which enhances your comfort and pumping efficiency. Ameda's CustomFit Flange System makes finding the right fit easy.

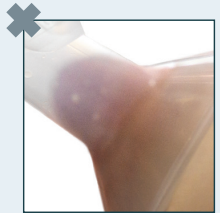
### Good Fit

During pumping, your nipple moves freely in the breast flange tunnel. You see space around the nipple. Not much areola is drawn into the tunnel with the nipple.



### Too Small

During pumping, some or all of your nipple rubs against the sides of the breast flange tunnel.



### Too Large

During pumping, more areola is drawn into the breast flange with your nipple. Your areola may rub against the side of the breast flange tunnel.

